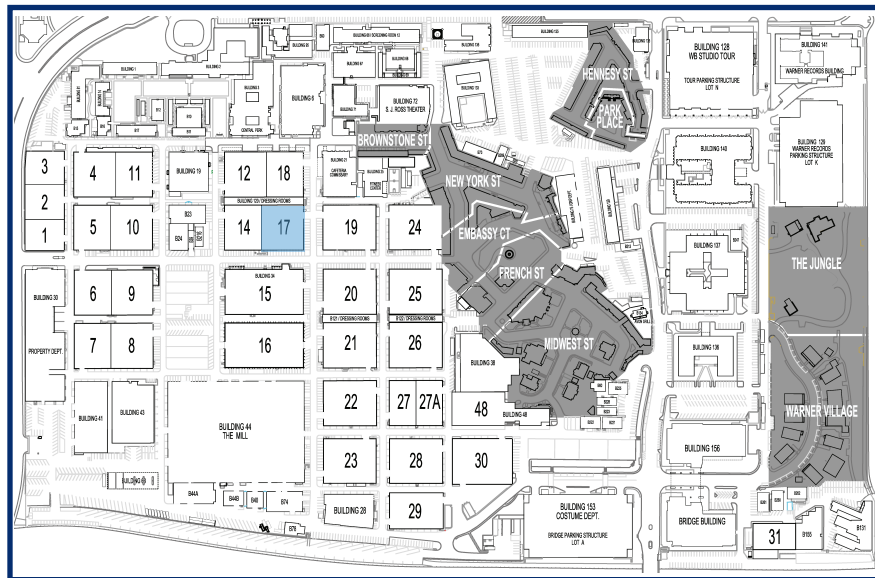
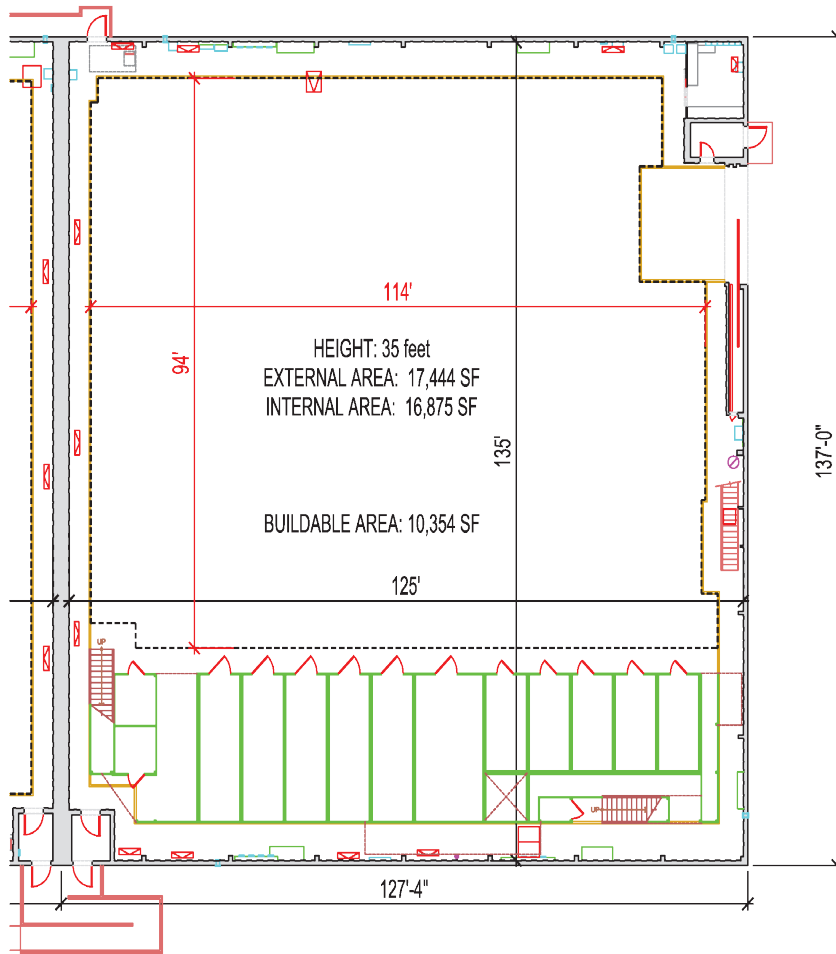


STAGE 17



STAGE 17

MEASUREMENTS

| | |
|---------------------------------|-------------------|
| Stage Height | 35' |
| Square Ft. | 16,875 SF |
| Dimensions | 125' x 135' |
| Buildable Area | 10,354 SF |
| Elephant Door Dimensions (East) | 19'6" W x 17'6" H |

UTILITIES

| | |
|------------------|------------------------------|
| Air Conditioning | Central |
| Heat | Yes |
| Power | 4800 amps / 3 phase |
| Internet | Internet and Fiber available |

SUPPORT SPACE

| | |
|----------------------------------|------|
| Int. Dressing Rooms w/ Restrooms | None |
| Gold Rooms | Yes |
| Sound Booth | None |
| Dimmer Room – Upper Catwalks | Yes |

WEIGHT RESTRICTIONS - STAGE FLOOR

| | |
|---|---|
| Multi-Layer Sub Floor w/ Cresform Surface | High density particle board atop (2) layers plywood atop raised compartment – rests atop 2x6 to 2x9" joists, supported by 6x6 to 8x8" wood girders, supported by 6x6 to 8x8" wood posts (6' on center) on pressure-treated sleeper planks or concrete blocks. |
| Temporary Load Capacity | 150 PSF |
| Max Gross Vehicle Weight (GVW) – Buildable Floor Area | 10,000 lbs. (2,500 per wheel) |
| Max (GVW) – Interior Perimeter | 10,000 lbs. (2,500 per wheel) |
| Max (GVW) – Truck Loading Zone | 14,000 lbs (3,500 per wheel) |

WEIGHT RESTRICTIONS - OVERHEAD LOADING

| | |
|--|---|
| Load Limit - Permanent Beams (6' x 8' - perpendicular to truss) | 500 lbs. single load / 300 lbs. for two loads |
| Load Limit - "Green Sticks" | 100 lbs. |
| Load only at nodes of roof truss or permanent beams. | DO NOT apply weight to center of truss or walkway planks. |
| Check connection of permanent beam to truss prior to load application. | |

- Please contact OPS at 818-954-6777 and Safety & Environmental Affairs at 818-954-2890 to discuss any weight load questions or concerns.
- Engineering approval required for any unusual load requirements on roof trusses or permanent beams.
- Fall Protection is mandatory whenever working beyond the catwalk or guardrail in the "ozone".