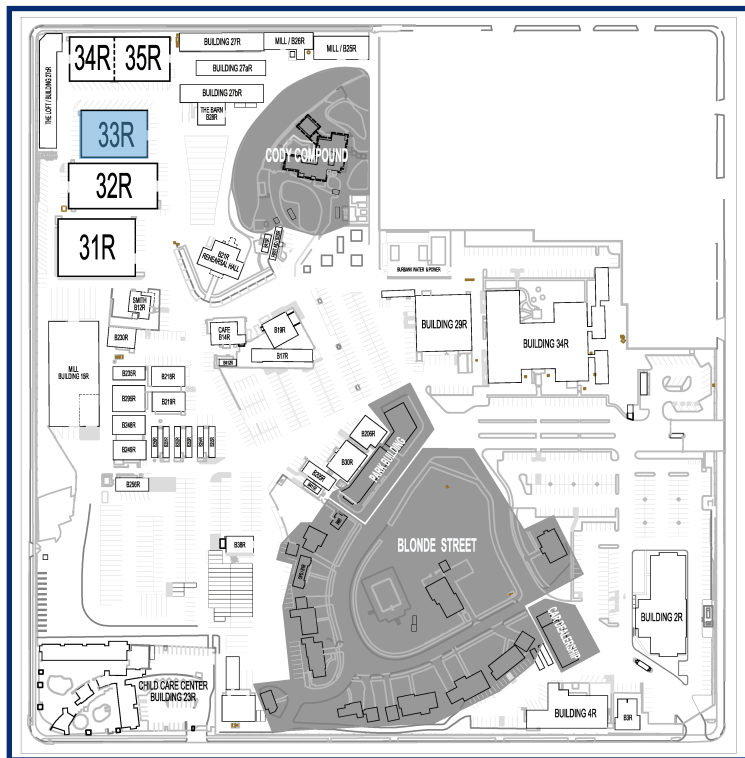
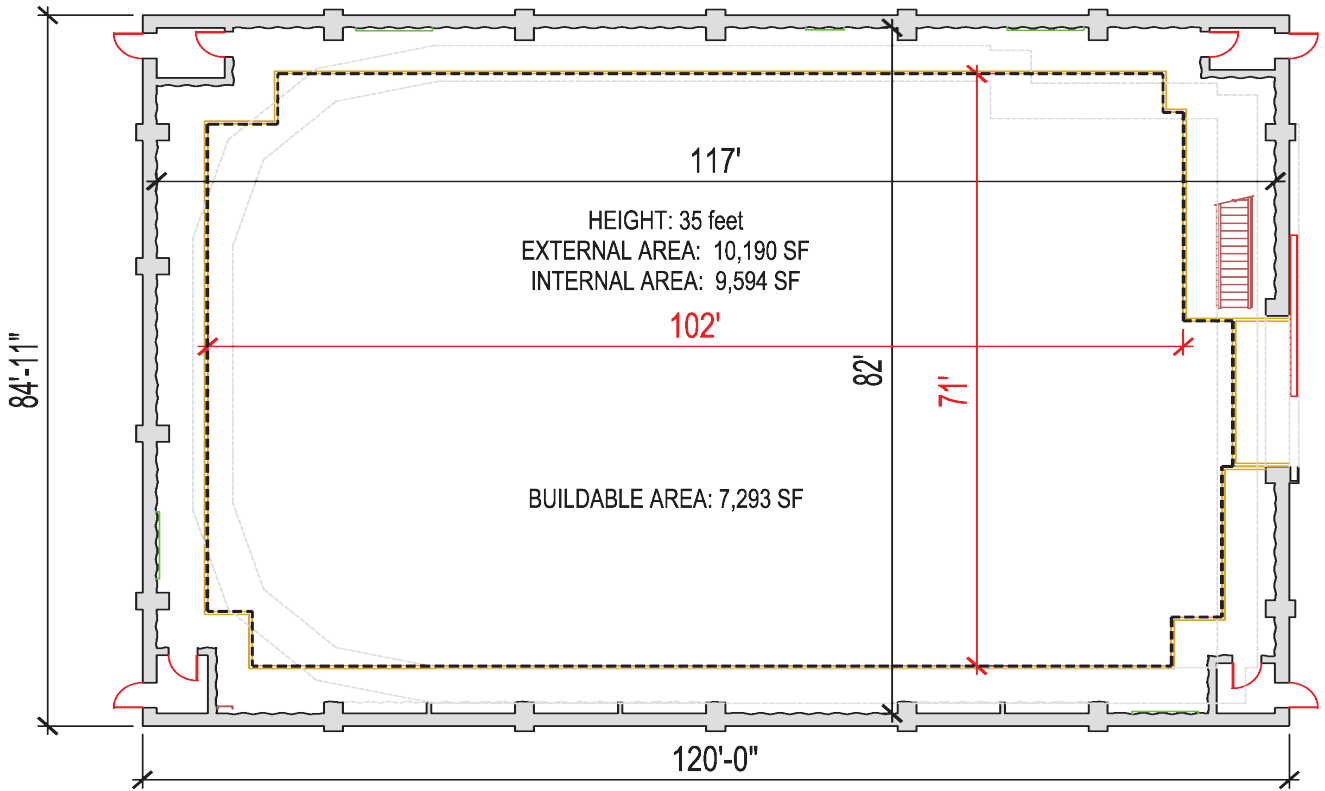


STAGE 33R



STAGE 33R

MEASUREMENTS

Stage Height	35'
Square Ft.	9,594 SF
Dimensions	82' x 117'
Buildable Area	7,293 SF
Elephant Door Dimensions (East)	18' W x 20' H

UTILITIES

Air Conditioning	Yes
Heat	Yes
Power	4800 amps / 3 phase
Internet	Internet and Fiber available

SUPPORT SPACE

Int. Dressing Rooms w/ Restrooms	None
Gold Rooms	None
Sound Booth	None
Dimmer Room – Upper Catwalks	None

WEIGHT RESTRICTIONS - STAGE FLOOR

Multi-Layer Sub Floor w/ Cresform Surface	High density particle board atop (2) layers plywood atop raised compartment – rests atop 2x6 to 2x9” joists, supported by 6x6 to 8x8” wood girders, supported by 6x6 to 8x8” wood posts (6’ on center) on pressure-treated sleeper planks or concrete blocks.
Temporary Load Capacity	150 PSF
Max Gross Vehicle Weight (GVW) – Buildable Floor Area	10,000 lbs. (2,500 per wheel)
Max (GVW) – Interior Perimeter	10,000 lbs. (2,500 per wheel)
Max (GVW) – Truck Loading Zone	14,000 lbs (3,500 per wheel)

WEIGHT RESTRICTIONS - OVERHEAD LOADING

Load Limit - Permanent Beams (6' x 8' - perpendicular to truss)	500 lbs. single load / 300 lbs. for two loads
Load Limit - "Green Sticks"	100 lbs.
Load only at nodes of roof truss or permanent beams.	DO NOT apply weight to center of truss or walkway planks.
Check connection of permanent beam to truss prior to load application.	

- Please contact OPS at 818-954-6777 and Safety & Environmental Affairs at 818-954-2890 to discuss any weight load questions or concerns.
- Engineering approval required for any unusual load requirements on roof trusses or permanent beams.
- Fall Protection is mandatory whenever working beyond the catwalk or guardrail in the “ozone”.