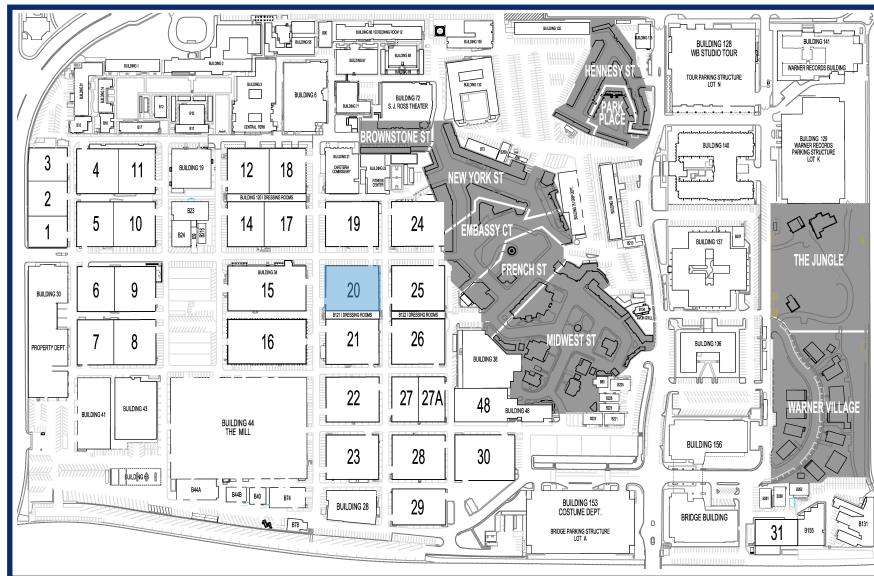
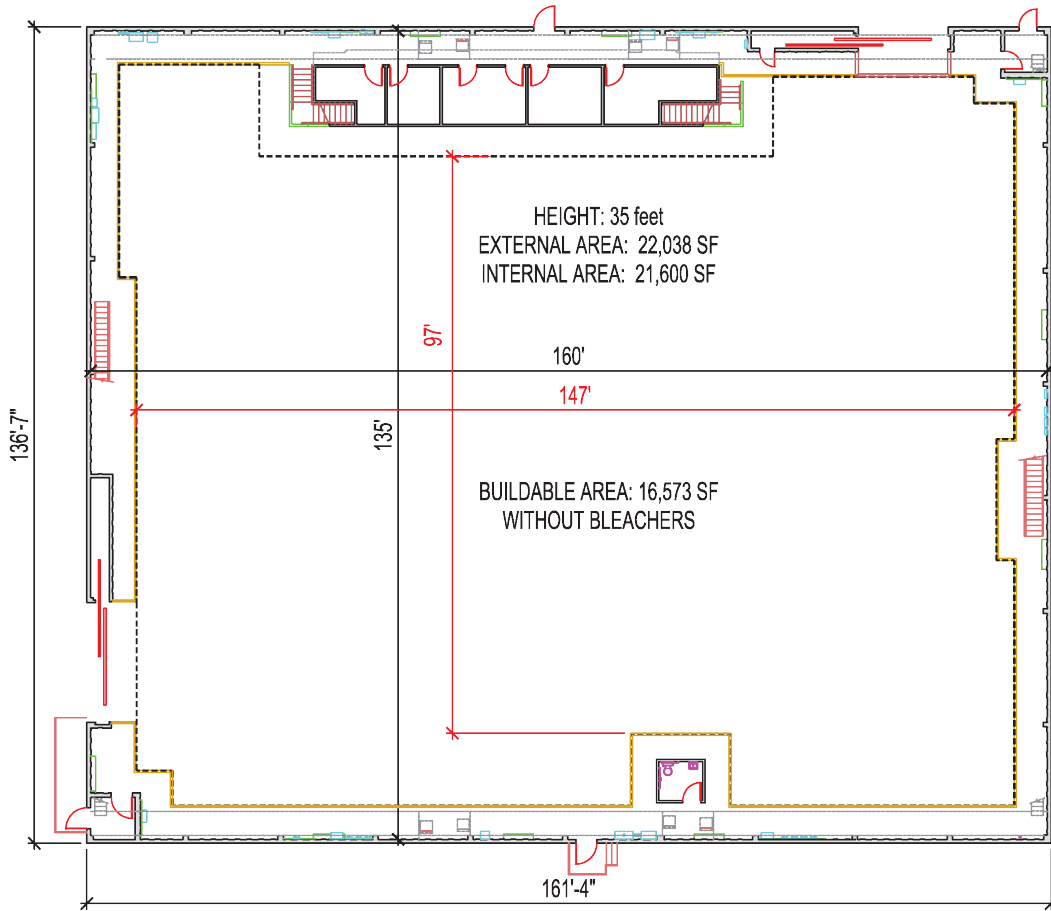


STAGE 20



STAGE 20

MEASUREMENTS

Stage Height	35'
Square Ft.	21,600 SF
Dimensions	160' x 135'
Buildable Area	16,573SF
Elephant Door Dimensions (West & North)	West: 19'6"W x 23'6"H; North: 14'6"W x 23'6"H

UTILITIES

Air Conditioning	Central
Heat	Yes
Power	4800 amps / 3 phase
Internet	Internet and Fiber available

SUPPORT SPACE

Int. Dressing Rooms w/ Restrooms	None
Gold Rooms	Yes
Sound Booth	Yes
Dimmer Room – Upper Catwalks	Yes

WEIGHT RESTRICTIONS – STAGE FLOOR

Multi-Layer Sub Floor w/ Cresform Surface	High density particle board atop (2) layers plywood atop concrete slab
Temporary Load Capacity	250 PSF
Max Gross Vehicle Weight (GVW) – Buildable Floor Area	40,000 lbs. (10,000 per wheel)
Max (GVW) – Interior Perimeter	40,000 lbs. (10,000 per wheel)
Max (GVW) – Truck Loading Zone	40,000 lbs (10,000 per wheel)

WEIGHT RESTRICTIONS – OVERHEAD LOADING

Load Limit - Permanent Beams (6' x 8' - perpendicular to truss)	500 lbs. single load / 300 lbs. for two loads
Load Limit - "Green Sticks"	100 lbs.
Load only at nodes of roof truss or permanent beams.	DO NOT apply weight to center of truss or walkway planks.
Check connection of permanent beam to truss prior to load application.	

- Please contact OPS at 818-954-6777 and Safety & Environmental Affairs at 818-954-2890 to discuss any weight load questions or concerns.
- Engineering approval required for any unusual load requirements on roof trusses or permanent beams.
- Fall Protection is mandatory whenever working beyond the catwalk or guardrail in the “ozone”.